

SWIM SPAS



BAHAMA SPAS

RELAXED AND HAPPY

Swim Spas

Optional Features

- (Circ) Circulation Pump
- in.Touch System
- (STB) Bluetooth Audio with Dock and LED Marine Grade Speakers
- (STI2) Infinity™ AM/FM / Bluetooth Audio
- Blower
- Rowing Equipment
- Swim Tether
- Elite Skirting

Additional charges may apply

Optional White Package

- White Trix and SS Jets
- Top rail LED Lighting
- Illuminated Fountains
- Illuminated Waterfalls
- Illuminated White Diverseters
- Illuminated Topside
- White Suctions
- White Weir Door
- Ultra Light Gray Pillows



Utopia Cay



Size: 92" x 160" x 51"
 Jets: 29 Stainless Steel Jets
 Gallons: 1,100

System

- 2 Illuminated River Jets
- 5" LED Footwell Light
- K450 Digital Topside Control
- 1 - 4.0kW Heater
- 1 - 4.0bhp Viper 2 Speed Pump
- 1 - 4.0bhp Viper 1 Speed Pump
- 220 V / 60 AMP Electrical
- 100 ft2 Filtration System
- Stainless Steel Grab Bar
- Foam Insulation
- UV-C Ozone
- (6) Illuminated Fountain jets
- Maintenance Free Skirting
- 2 Pillows
- 4" Blue Tile Accent

Weight: Dry / Filled (approx.)

2,200 lbs. / 11,000 lbs.

13' Pro / 13' Plus



Size: 92" x 160" x 54"
 Jets: 10 Stainless Steel Jets
 Gallons: 1,530

System

- 2 Illuminated River Jets
- LED Lighting
- Underwater Light
- Digital Topside Control
- 1 - 4.0kW Heater
- 2 - 5.0bhp 56 Frame
- 1 - 7.0bhp 56 Frame
- 220 V / 60 AMP Electrical
- 100 ft2 Filtration System
- 3 Stainless Steel Grab Bars
- Illuminated Jets
- 6 Illuminated Fountain Jets
- Foam Insulation
- UV-C Ozone
- Maintenance Free Skirting
- Pillows
- Swimming Lane Graphics
- 4" Blue Tile Accent

Weight: Dry / Filled (approx.)

2,100 lbs. / 14,500 lbs.

13' Pro +

13' Pro Swim Spa with 17' Pro Specifications and Features

16' Pro



Size: 92 x 192" x 60"
 Jets: 29 Stainless Steel Jets
 Gallons: 2,100

System

3 Illuminated River Jets
 LED Lighting
 Underwater Lights
 Digital Topside Control
 1 - Heater
 3 - 4.0bhp Viper Pumps
 1 - 7.0bhp 56 Frame
 220 V / 60 AMP Electrical
 100 ft2 Filtration System
 3 Stainless Steel Grab Bars
 Illuminated Jets
 8 Illuminated Fountain Jets
 Foam Insulation
 UV-C Ozone
 Maintenance Free Skirting
 Rowing/Exercise System
 Pillows
 Swimming Lane Graphics
 4" Blue Tile Accent
 (IN.ST) In.Stream Audio System
 w / Four Pop-Up Speakers
 Swim Coach - Multi Programmable
 Workout

Weight: Dry / Filled (approx.)

2,400 lbs. / 17,000 lbs.

17' Pro



Size: 92" x 199" x 54"
 Jets: 30 Stainless Steel Jets
 Gallons: 1,850

System

3 Illuminated River Jets
 LED Lighting
 Underwater Lights
 Digital Topside Control
 2 - 4.0kW Heaters
 3 - 5.0bhp 56 Frame
 1 - 7.0bhp 56 Frame
 220 V / 60 AMP Electrical
 100 ft2 Filtration System
 3 Stainless Steel Grab Bars
 Illuminated Jets
 6 Illuminated Fountain Jets
 Illuminated Cup Holders
 Foam Insulation
 UV-C Ozone
 Maintenance Free Skirting
 Rowing/Exercise System
 Pillows
 Swimming Lane Graphics
 4" Blue Tile Accent
 Bluetooth Audio
 4 LED Marine Grade Speakers
 Swim Coach - Multi Programmable
 Workout

Weight: Dry / Filled (approx.)

2,700 lbs. / 17,500 lbs.

19' Pro Dual



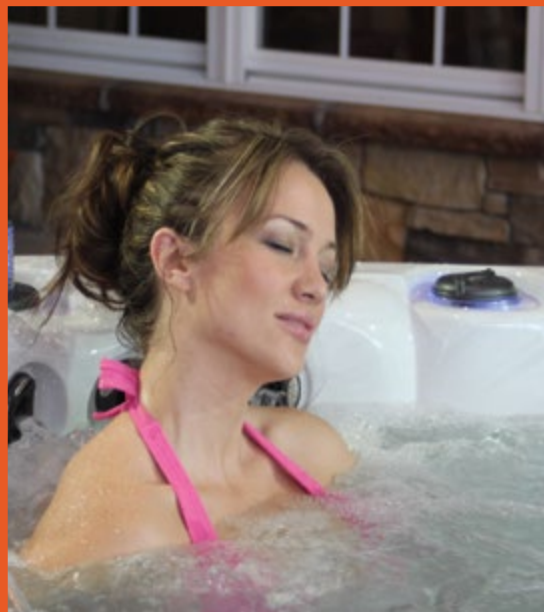
Size: 92" x 224" x 54"
 Jets: 39 Stainless Steel Jets
 Gallons: Swim 1,500 / Spa 270

System

3 Illuminated River Jets
 LED Lighting
 Under Water Lights
 Digital Topside Controls
 1 - 4.0kW Heater on Swim Side
 1 - 2.0kW Heater on Spa Side
 3 - 5.0bhp 56 Frame
 2 - 7.0bhp 56 Frame
 2 - 220 V / 60 AMP Electrical
 150 ft2 Filtration System
 3 Stainless Steel Grab Bars
 8 Illuminated Fountain Jets
 Illuminated Cup Holders
 Foam Insulation
 2 - UV-C Ozone Generators
 Maintenance Free Skirting
 Rowing/Exercise System
 Pillows
 Swimming Lane Graphics
 4" Blue Tile Accent
 Bluetooth Audio
 4 LED Marine Grade Speakers
 Swim Coach - Multi Programmable
 Workout

Weight: Dry / Filled (approx.)

3,500 lbs. / 17,700 lbs.



www.bahamaspas.net



BAHAMA SPAS
RELAXED AND HAPPY

2020 The manufacturer reserves the right to change product selections and/or make product modifications without notice. Your Bahama Spas Dealer/Contractor is an independent business person and not an agent or employee of the manufacturer of Bahama Spas product line or any of its subsidiaries. Neither the manufacturer of Bahama Spas nor its subsidiaries accept any responsibility for any representations, statements or contracts made by any Spa Dealer/Contractor. Note: Color samples shown are representations of actual color, and are for identification only. Because the color may vary, Bahama Spas does not guarantee that this color will be an exact match to the image shown.

Note: Warranty may vary by model, see warranty for further details



Bahama Spas proudly uses recycled materials where possible. We practice "Green Manufacturing" procedures, while ensuring an unrivaled standard of quality.

We Care!



Lucite.SPA

Lucite is a registered trademark of Lucite International, Inc.