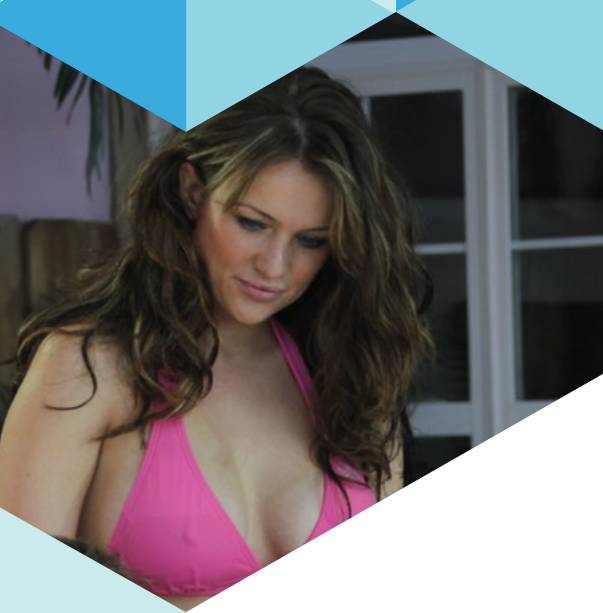




## COCONUT BAY II/III

### BASIC SPECIFICATIONS

Size: 92" x 92" x 39/45"  
Jets: 74  
Gallons: 425  
Pumps: Two 7.0 bhp or Three 6.0 bhp



**BAHAMA SPAS**  
RELAXED AND HAPPY

## Jet System

Jets	74
Poly Storm Spinner	11
Poly Storm Directional	8
Master Massage	2 (28)
Mini Storm Directional	12
Cluster Storm Pulsators	8
Mini Storm Spinner	4
Whirlpool / Monster Poly	1
Power Storm Rifle	-
Power Storm Spinners	-
Power Storm Massage	-
Large Face Euro	-
Euro	1
Ozone Purification Jet	1
Fountain Jets	-
Cascading Waterfall	3

## Equipment

Electrical	220 V
AMPS	60 A
Gecko™ XE Power Pack	✓
*VGB Compliant Intake	✓
Pumps (Qty / Size BHP)	*2 / 7.0
Pump Frame	56
Pump Speeds (#1 p / #2 p)	*2 / 1
4kW Heater	✓
Plasma Ozone	✓
Filtration System Size	100 ft. <sup>2</sup>
Icynene™ Insulation	✓
LED Underwater Lighting	✓

Available with three 6.0 bhp pumps

## Interior / Exterior

Acrylic Surface Material	✓
Maintenance Free Skirting	✓
ABS Bottom Surface	✓
Air Diverters	4
Water Diverters	2
Neck Jet Diverter	1
On/Off Diverter	1
Comfort Padded Headrest	3
Stereo Sound System	Optional

# COCONUT BAY II/III

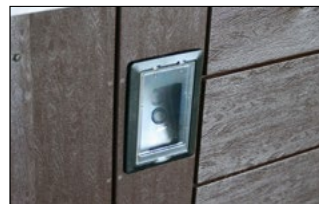
Weight: Dry / Filled: 900 lbs. / 4300 lbs.



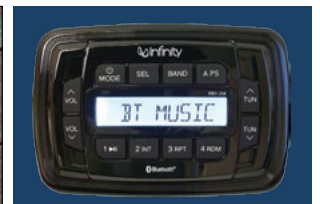
## OPTIONAL FEATURES

(STB) Bluetooth Audio with Dock  
 (STI2) Infinity™ AM/FM / Bluetooth Audio  
 Circulation Pump  
 LED Jets  
 White Palm Features

Includes filter well LED lights



Bluetooth Docking Station



Infinity™ Audio System



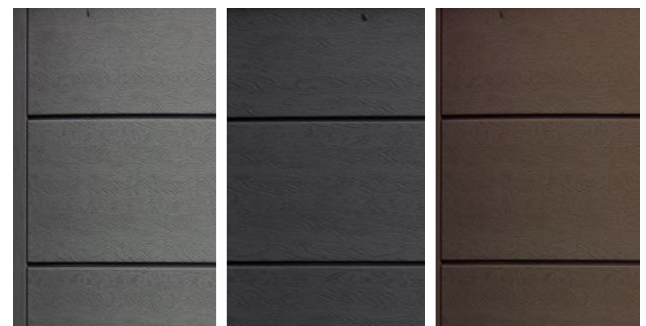
Circulation Pump



Illuminated Jets / White Palm



## Maintenance Free Synthetic Skirting Options



Gray

Black

Espresso



**BAHAMA SPAS**  
RELAXED AND HAPPY

[www.bahamaspas.net](http://www.bahamaspas.net)



Lucite.SPA



Bahama Spas reserves the right to change product selections and/or make product modifications.

Your Bahama Spa Dealer/Contractor is an independent business person and not an agent or employee of Bahama Spas or any of its subsidiaries. Neither Bahama Spas nor its subsidiaries accept any responsibility for any representations, statements or contracts made by any Hot Tub Dealer/Contractor.

Note: Color samples shown are representations of actual color, but are for identification only. Because the color may vary, Bahama Spas does not guarantee that this color will be an exact match to the image shown.

The Bluetooth® word mark and logo are registered trademarks owned by Bluetooth SIG, Inc. Other trademarks and trade names are those of their respective owners