

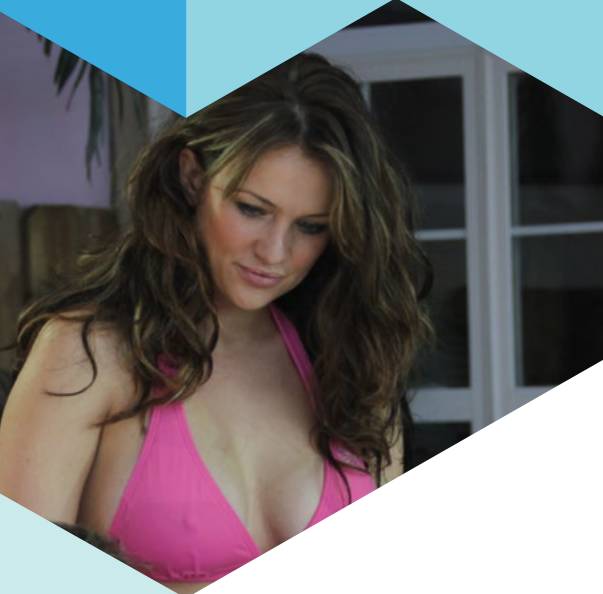


## PARADISE BAY III/III

### BASIC SPECIFICATIONS



Size: 92" x 102" x 39/45"  
Jets: 77  
Gallons: 475



**BAHAMA SPAS**  
RELAXED AND HAPPY

## System

Fountain Jets  
Electrical 220V / 60A  
Digital Controls  
\*VGB Compliant Intake  
Pumps (Qty / Size BHP) 2 / 7.0 or 3 / 6.0  
Heater  
SimpleClear™ UV-C Water Sanitization  
Filtration System Size 100 ft.2  
Icynene™ Insulation  
LED Underwater Lighting

## Interior / Exterior

Acrylic Surface Material  
Maintenance Free Skirting  
ABS Bottom Surface  
Air Diverters  
Water Diverters  
Neck Jet Diverter  
On/off Diverter  
Comfort Padded Headrest

## Weight: Dry / Filled (approx.)

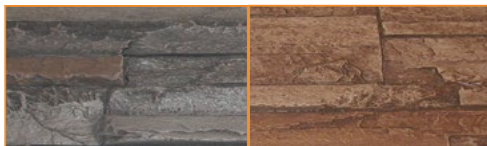
1000 lbs. / 4800 lbs.

## Standard Skirting Color & Style Choices



Gray      Black      Espresso

## Upgraded Stone Skirting Options



Canyon Gray Stone      Sierra Brown Stone

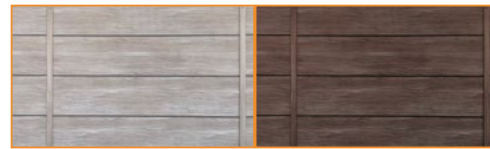
## PARADISE BAY II/III



## OPTIONAL FEATURES

- (Circ) Circulation Pump
- (BLK/WP) - Black or White Palm Jets & Fittings
- (IT) In.Touch 2
- (BT) Bluetooth Audio System
- (IN.MIX) In.Mix Lighting system
- (IN.ST) In.Stream Audio System
- (STI2) Infinity™ AM/FM / Bluetooth Audio
- (BLC) Black LED Lit Skirt Corners  
*Not available on Twin Palms model*
- (ELITE) Elite Skirting Upgrade
- (SS) Stone Skirting

## Upgraded "Elite" Skirting Color & Style Choices



Coastal Gray      Mocha Brown



**BAHAMA SPAS**  
RELAXED AND HAPPY

[www.bahamaspas.net](http://www.bahamaspas.net)



Lucite.SPA



ICYNENE

Bahama Spas reserves the right to change product selections and/or make product modifications.

Your Bahama Spa Dealer/Contractor is an independent business person and not an agent or employee of Bahama Spas or any of its subsidiaries. Neither Bahama Spas nor its subsidiaries accept any responsibility for any representations, statements or contracts made by any Hot Tub Dealer/Contractor.

Note: Color samples shown are representations of actual color, but are for identification only. Because the color may vary, Bahama Spas does not guarantee that this color will be an exact match to the image shown.

The Bluetooth® word mark and logo are registered trademarks owned by Bluetooth SIG, Inc. Other trademarks and trade names are those of their respective owners