



TWIN PALMS



BASIC SPECIFICATIONS

Size: 60" x 825." x30"
Jets: 50 Stainless Steel Jets
Gallons: 225



BAHAMA SPAS
RELAXED AND HAPPY

System

Fountain Jets
Electrical 220V / 60 A
Digital Controls
*VGB Compliant Intake
Pumps (Qty / Size BHP) 2 / 6.0
Pump Frame 56
4kW Heater
Filtration System Size 50 ft.2
Icynene™ Insulation
LED Underwater Lighting
LED Filter Lighting

Interior / Exterior

Acrylic Surface Material
Maintenance Free Skirting
ABS Bottom Surface
Air Diverters
Water Diverters
Neck Jet Diverter
On/Off Diverter
Comfort Padded Headrest


Weight: Dry / Filled (approx.)

375 lbs. / 2175 lbs.

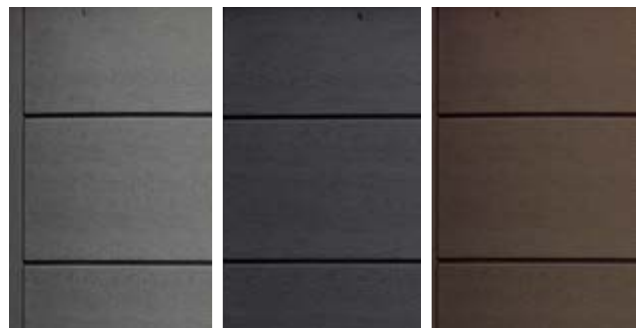
TWIN PALMS



OPTIONAL FEATURES

- (IT) In.Touch 2
- (BT) Bluetooth Audio System  **Bluetooth™**
- (IN.MIX) In.Mix Lighting system
- (IN.ST) In.Stream Audio

Maintenance Free Synthetic Skirting Options



Gray

Black

Espresso



BAHAMA SPAS
RELAXED AND HAPPY

www.bahamaspas.net



Lucite.SPA



ICYNENE

Bahama Spas reserves the right to change product selections and/or make product modifications.

Your Bahama Spa Dealer/Contractor is an independent business person and not an agent or employee of Bahama Spas or any of its subsidiaries. Neither Bahama Spas nor its subsidiaries accept any responsibility for any representations, statements or contracts made by any Hot Tub Dealer/Contractor.

Note: Color samples shown are representations of actual color, but are for identification only. Because the color may vary, Bahama Spas does not guarantee that this color will be an exact match to the image shown.

The Bluetooth® word mark and logo are registered trademarks owned by Bluetooth SIG, Inc.
Other trademarks and trade names are those of their respective owners